

**"SHE WATCHES OVER THE WAYS OF HER HOUSEHOLD,
AND DOES NOT EAT THE BREAD OF IDLENESS."**

PROVERBS 31:27



BIBLE



BIBLE

HISTORY/SOCIAL SCIENCE

HISTORY/SOCIAL
SCIENCE



READING

READING

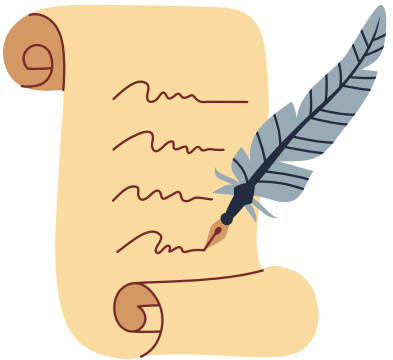


LANGUAGE ARTS

LANGUAGE ARTS



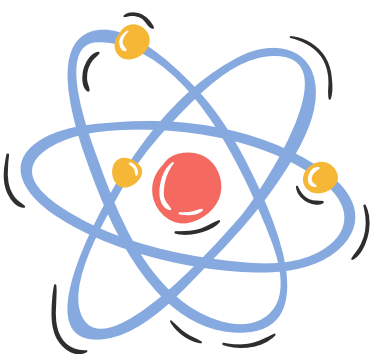
WRITING



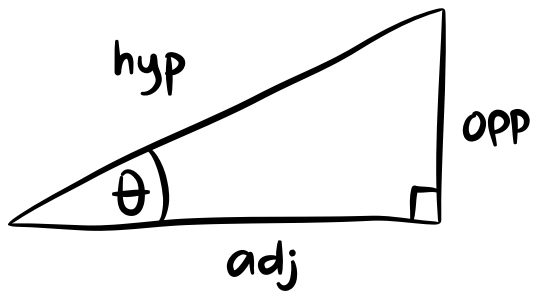
WRITING

SCIENCE

SCIENCE



MATH



$$\sin(\theta) = \frac{\text{opp}}{\text{hyp}}$$

MATH



ART

EXTRACURRICULAR



EXTRACURRICULAR

MOMENTS TO REMEMEMBER

MOMENTS TO REMEMBER

